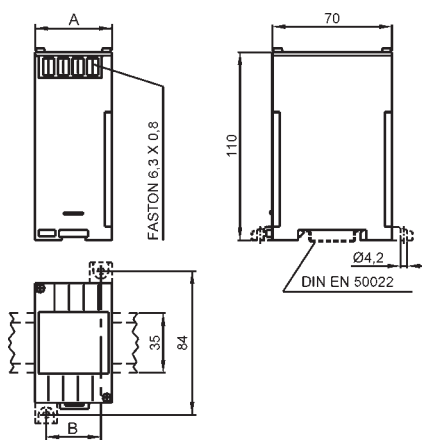


MCO...A



Codice - Code	A	B	Peso - Weight
MCOPFXXXX MCOP...XXXX	45	32	0,500
MCOW...XXXX MCOR...XXXX	100	86	0,800±1,100

Schemi inserzione vedere pag 10.38
Wiring diagrams see page 10.38

DATI PER L'ORDINAZIONE

- codice
- caratteristiche secondo tipo
- opzioni (classe 0,5%)

ORDERING INFORMATION

- code
- characteristics depending on type
- operating frequency
- options (accuracy class 0,5%)

ACCESSORI CONVERTITORI ACCESSORY TRANSDUCERS

DATI TECNICI

classe di precisione
sovraccarico permanente
sovraccarico di breve durata
corrente nominale di uscita
carico massimo uscita
temperatura di funzionamento
temperatura di magazzino
custodia in materiale
termoplastico autoestinguente
alimentazione
campo ingresso
consumo
tensione di prova
prova impulsiva
conforme a

TECHNICAL DATA

accuracy class
continuous overload
short-term overload
nominal output current
max. output load
operating temperature
storage temperature
self extinguishing
thermoplastic material
power supply
input range
consumption
test voltage
surge test
according to

1 (0,5 a rich./on req.)
2 x In; 1,2 x Un
20 x In; 2 x Un (300msec)
1mA_{dc} (±0,5mA)
2kΩ
-10...0...+45...+50°C
-30...+70°C

UL 94-V0
autoalimentati/self-supplied
90±110%Un
3VA
2kV, 50Hz, 60sec.
5kV, 1,2/50 μsec.
EN 60688

POTENZA ATTIVA, REATTIVA E APPARENTE - ACTIVE, REACTIVE & APPARENT POWER

SISTEMA - SYSTEM	CODICE - CODE	
	W	VAR
Monofase Single-phase	MCOWSXXXXA	MCORSXXXXA
Trifase, 3 fili, carico equilibrato Three-phase, 3 wires, balanced load	MCOWYXXXXA	MCORYXXXXA
Trifase, 4 fili, carico equilibrato Three-phase, 4 wires, balanced load	MCOWNXXXXA	MCORNXXXXA
Trifase, 3 fili, carico squilibrato Three-phase, 3 wires, unbalanced load	MCOWDXXXXA	MCORDXXXXA
Trifase, 4 fili, carico squilibrato Three-phase, 4 wires, unbalanced load	MCOWTXXXXA	MCORTXXXXA

ANGOLO DI FASE - PHASE ANGLE

SISTEMA - SYSTEM	CODICE - CODE
Monofase - Single-phase	MCOPSXXXXA
Trifase, 3 fili - Three-phase, 3 wires	MCOPYXXXXA
Trifase, 4 fili - Three-phase, 4 wires	MCOPNXXXXA

ALTRE MISURE - OTHERS MEASUREMENTS

TIPO - TYPE	CODICE - CODE
Frequenza Frequency	MCOPFXXXXA

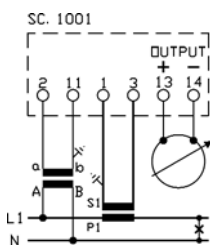
DESCRIZIONE:

Accessori convertitori impiegati in abbinamento ad indicatori, registratori, sistemi di acquisizione e/o visualizzazione dove l'isolamento galvanico dei circuiti di misura non sia necessario o sia già presente, e dove non sia richiesto di coprire grandi distanze. L'uscita è in corrente continua, indipendente dal carico e proporzionale alla grandezza misurata.

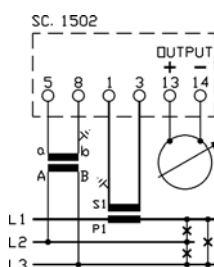
DESCRIPTION:

Accessory transducers used in conjunction with indicators, recorders or acquisition and/or visualization systems, where galvanic insulation from measuring circuits is already existing or not required, and where it is not necessary to transmit the signal at large distance. The output is a load independent d.c. current, proportional to the measured variable.

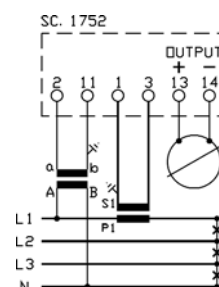
SCHEMI DI INSERZIONE - INDICATORI ANALOGICI CON ACCESSORIO CONVERTITORE SEPARATO WIRING DIAGRAMS - ANALOGUE METERS WITH SEPARATE ACCESSORY TRANSDUCCERS



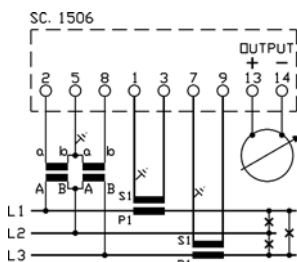
MCO...SXXXXA
A/F48WS - A/F48PS - A/F52WS
A/F72WS - A/F96WS - A/F14WS
monofase - single-phase



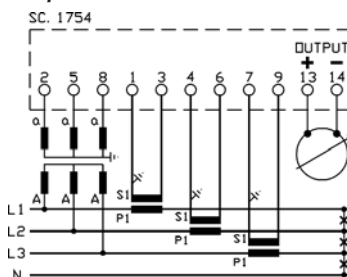
MCO...YXXXXA
A/F48WY - A/F48PY - A/F52WY
A/F72WY - A/F96WY - A/F14WY
trifase 3 fili carico equilibrato
3 phase 3 wires balanced load



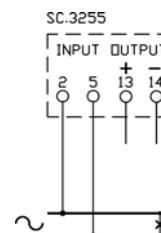
MCO...NXXXXA
A/F48WN - A/F48PN - A/F52WN
A/F72WN - A/F96WN - A/F14WN
trifase 4 fili carico equilibrato
3 phase 4 wires balanced load



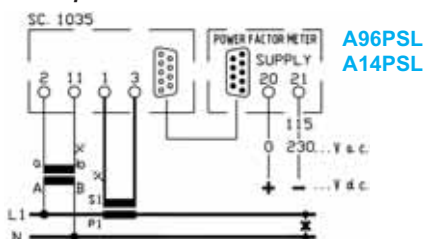
MCO...DXXXXA
A/F48WD - A/F52WD - A/F72WD
A/F96WD - A/F14WD
trifase 3 fili carico squilibrato
3 phase 3 wires unbalanced load



MCO...TXXXXA
A/F48WT - A/F52WT - A/F72WT
A/F96WT - A/F14WT
trifase 4 fili carico squilibrato
3 phase 4 wires unbalanced load

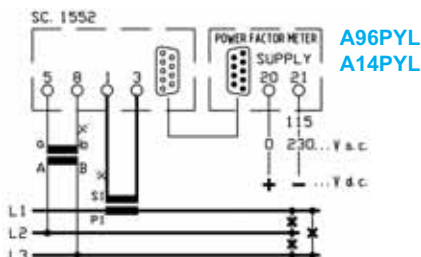


A48FP - F48FP



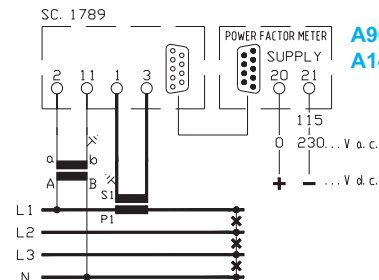
monofase - single-phase

A96PSL
A14PSL



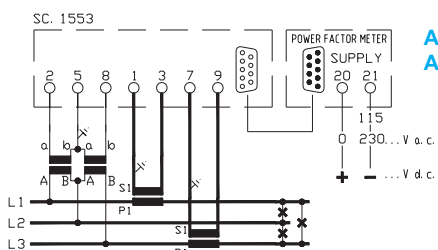
trifase 3 fili carico equilibrato
3 phase 3 wires balanced load

A96PYL
A14PYL



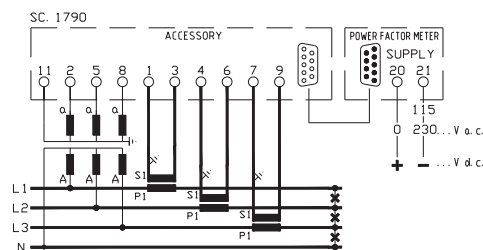
trifase 4 fili carico equilibrato
3 phase 4 wires balanced load

A96PNL
A14PNL



trifase 3 fili carico squilibrato
3 phase 3 wires unbalanced load

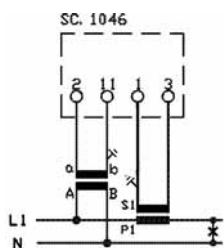
A96PDL
A14PDL



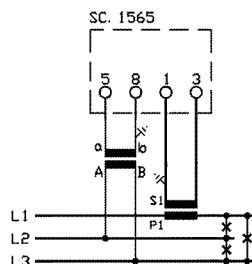
trifase 4 fili carico squilibrato
3 phase 4 wires unbalanced load

A96PTL
A14PTL

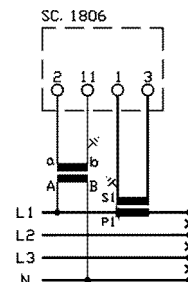
SCHEMI DI INSERIMENTO INDICATORI ANALOGICI - ANALOGUE METERS WIRING DIAGRAMS



A/F48PS - A/F72PS - A/F96PS - A/F14PS



A/F48PY - A/F72PY - A/F96PY - A/F14PY



A/F48PN - A/F72PN - A/F96PN - A/F14PN