



# SCEGLI IL TUO CONNETTORE

Una volta definiti  
i seguenti parametri tecnici  
fate la Vostra scelta  
tra le nostre gamme...

1

## Frutti

quanti contatti?  
quale tensione?  
quale corrente?  
quale sezione cavo?  
che tipo di connessione  
(squich, vite, crimpare o molla)?

2

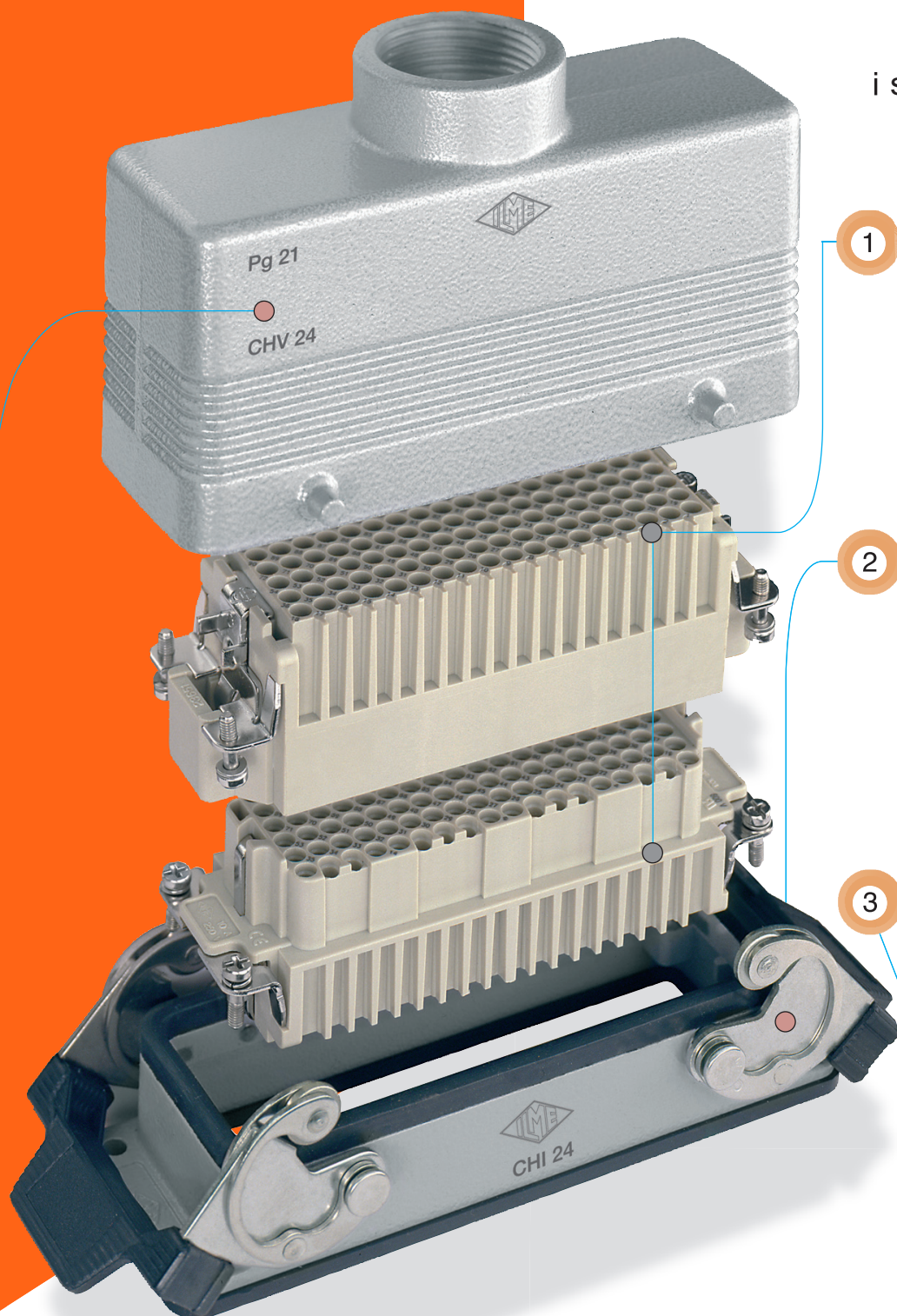
## Custodie fisse

quante leve?  
che tipo d'installazione  
(da incasso o da parete)?  
con sportello?

3

## Custodie mobili,

di quale tipo di filettatura  
avete bisogno? (Pg o metrico)  
quale uscita: laterale o verticale?  
con piolini o leve?



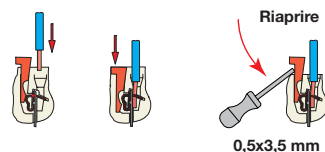
... lasciatevi guidare dal colore

# 1

## Prima di tutto individuare i frutti

corrente nominale	tensione nominale	N. poli	sezione conduttori in mm <sup>2</sup>	tipo di connessione	resistenza del contatto mΩ	certificazione	serie frutti		grandezza frutti/custodie
							spina	presa	
10A	50V	8 senza ⊕	0,14 a 2,5	①	3	UL, CSA, CCC	CDM 08	CDF 08	21.21 ●
10A	250V	3 e 4	0,75 a 2,5	②	1	UL, CSA, CCC	CKM 03 CKM 04	CKF 03 CKF 04	21.21 ●
10A	400V	3 e 4	0,14 a 2,5	③	1	UL, CSA, CCC	CKSM 03 CKSM 04	CKSF 03 CKSF 04	21.21 ●
10A	250V	7	0,14 a 2,5	①	3	UL, CSA, CCC	CDM 07	CDF 07	21.21 ●
10A	250V	15	0,14 a 2,5	①	3	UL, CSA, CCC	CDM 15	CDF 15	49.16 ●
10A	250V	24	0,14 a 2,5	①	3	UL, CSA, CCC	CDDM 24	CDDF 24	44.27 ●
10A	250V	25	0,14 a 2,5	①	3	UL, CSA, CCC	CDM 25	CDF 25	66.16 ●
10A	250V	38	0,14 a 2,5	①	3	UL, CSA, CCC	CDDM 38	CDDF 38	66.16 ●
10A	250V	40	0,14 a 2,5	①	3	UL, CSA, CCC	CDM 40	CDF 40	77.27 ●
10A	250V	42	0,14 a 2,5	①	3	UL, CSA, CCC	CDDM 42	CDDF 42	57.27 ●
10A	250V	50	0,14 a 2,5	①	3	UL, CSA, CCC	CDM 25 + CDM 25	CDF 25 + CDF 25	66.40 ●
10A	250V	64	0,14 a 2,5	①	3	UL, CSA, CCC	CDM 64	CDF 64	104.27 ●
10A	250V	72	0,14 a 2,5	①	3	UL, CSA, CCC	CDDM 72	CDDF 72	77.27 ●
10A	250V	80	0,14 a 2,5	①	3	UL, CSA, CCC	CDM 40 + CDM 40	CDF 40 + CDF 40	77.62 ●
10A	250V	108	0,14 a 2,5	①	3	UL, CSA, CCC	CDDM 108	CDDF 108	104.27 ●
10A	250V	128	0,14 a 2,5	①	3	UL, CSA, CCC	CDM 64 + CDM 64	CDF 64 + CDF 64	104.62 ●
10A	250V	144	0,14 a 2,5	①	3	UL, CSA, CCC	CDDM 72 + CDDM 72 N	CDDF 72 + CDDF 72 N	77.62 ●
10A	250V	216	0,14 a 2,5	①	3	UL, CSA, CCC	CDDM 108 + CDDM 108 N	CDDF 108 + CDDF 108 N	104.62 ●
10A	400V	9	0,14 a 2,5	③	1		CDSM 09	CDSF 09	44.27 ●
10A	400V	18	0,14 a 2,5	③	1		CDSM 18	CDSF 18	57.27 ●
10A	400V	27	0,14 a 2,5	③	1		CDSM 27	CDSF 27	77.27 ●
10A	400V	42	0,14 a 2,5	③	1		CDSM 42	CDSF 42	104.27 ●
10A	400V	54	0,14 a 2,5	③	1		CDSM 27 + CDSM 27 N	CDSF 27 + CDSF 27 N	77.62 ●
10A	400V	84	0,14 a 2,5	③	1		CDSM 42 + CDSM 42 N	CDSF 42 + CDSF 42 N	104.62 ●
16A	500V	6	0,14 a 2,5	③	3	UL, CSA, CCC	CSEM 06	CSEF 06	44.27 ●
16A	500V	6	0,5 a 4,0	②	1	UL, CSA, CCC	CNEM 06 T	CNEF 06 T	44.27 ●
16A	500V	6	0,14 a 2,5	④	3	UL, CSA, CCC	CSHM 06	CSHF 06	44.27 ●
16A	250V	10	0,25 a 4,0	②	1	UL, CSA, CCC	CDAM 10	CDAF 10	49.16 ●
16A	500V	10	0,14 a 2,5	③	3	UL, CSA, CCC	CSEM 10	CSEF 10	57.27 ●
16A	500V	10	0,5 a 4,0	②	1	UL, CSA, CCC	CNEM 10 T	CNEF 10 T	57.27 ●
16A	500V	10	0,14 a 2,5	④	3	UL, CSA, CCC	CSHM 10	CSHF 10	57.27 ●
16A	250V	16	0,25 a 4,0	②	1	UL, CSA, CCC	CDAM 16	CDAF 16	66.16 ●
16A	500V	16	0,14 a 2,5	③	3	UL, CSA, CCC	CSEM 16	CSEF 16	77.27 ●
16A	500V	16	0,5 a 4,0	②	1	UL, CSA, CCC	CNEM 16 T	CNEF 16 T	77.27 ●
16A	500V	16	0,14 a 2,5	④	3	UL, CSA, CCC	CSHM 16	CSHF 16	77.27 ●
16A	500V	24	0,14 a 2,5	③	3	UL, CSA, CCC	CSEM 24	CSEF 24	104.27 ●
16A	500V	24	0,5 a 4,0	②	1	UL, CSA, CCC	CNEM 24 T	CNEF 24 T	104.27 ●
16A	500V	24	0,14 a 2,5	④	3	UL, CSA, CCC	CSHM 24	CSHF 24	104.27 ●
16A	250V	32	0,25 a 4,0	②	1	UL, CSA, CCC	CDAM 16 + CDAM 16 N	CDAF 16 + CDAF 16 N	66.40 ●
16A	500V	32	0,14 a 2,5	③	3	UL, CSA, CCC	CSEM 16 + CSEM 16 N	CSEF 16 + CSEF 16 N	77.62 ●
16A	500V	32	0,5 a 4,0	②	1	UL, CSA, CCC	CNEM 16 T + CNEM 16 TN	CNEF 16 T + CNEF 16 TN	77.62 ●
16A	500V	32	0,14 a 2,5	④	3	UL, CSA, CCC	CSHM 16 + CSHM 16 N	CSHF 16 + CSHF 16 N	77.62 ●
16A	500V	48	0,14 a 2,5	③	3	UL, CSA, CCC	CSEM 24 + CSEM 24 N	CSHF 24 + CSHF 24 N	104.62 ●
16A	500V	48	0,5 a 4,0	②	1	UL, CSA, CCC	CNEM 24 T + CNEM 24 TN	CNEF 24 T + CNEF 24 TN	104.62 ●
16A	500V	48	0,14 a 2,5	④	3	UL, CSA, CCC	CSHM 24 + CSHM 24 N	CSHF 24 + CSHF 24 N	104.62 ●
35A	400V	6	1,5 a 6	②	0,5	UL, CSA, CCC	CPM 06	CPF 06	77.27 ●
80A	400/690V	4	fino a 16	②	0,3	UL, CSA, CCC	CXM 4/0	CXF 4/0	77.27 ●
80A	400/690V	4/2 (16A)	fino a 16	②	0,3/1	UL, CSA, CCC	CXM 4/2	CXF 4/2	77.27 ●
80A	230/400V	4/8 (16A)	fino a 16	②	0,3/1	UL, CSA, CCC	CXM 4/8	CXF 4/8	104.27 ●

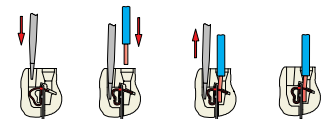
④ = SQUICH



② = connessione a vite



③ = connessione a molla



① = a crimpare

CD



Contatti femmina a crimpare – argentati

CDFA 0.3	sezione 0,14+0,37 mm <sup>2</sup>	- AWG 26+22
CDFA 0.5	sezione 0,5 mm <sup>2</sup>	- AWG 20
CDFA 0.7	sezione 0,75 mm <sup>2</sup>	- AWG 18
CDFA 1.0	sezione 0,1 mm <sup>2</sup>	- AWG 18
CDFA 1.5	sezione 1,5 mm <sup>2</sup>	- AWG 16
CDFA 2.5	sezione 2,5 mm <sup>2</sup>	- AWG 14

Contatti maschio a crimpare – argentati

CDMA 0.3	sezione 0,14+0,37 mm <sup>2</sup>	- AWG 26+22
CDMA 0.5	sezione 0,5 mm <sup>2</sup>	- AWG 20
CDMA 0.7	sezione 0,75 mm <sup>2</sup>	- AWG 18
CDMA 1.0	sezione 0,1 mm <sup>2</sup>	- AWG 18
CDMA 1.5	sezione 1,5 mm <sup>2</sup>	- AWG 16
CDMA 2.5	sezione 2,5 mm <sup>2</sup>	- AWG 14



CSH

Connessione senza utensili



NOVITÀ



CDS

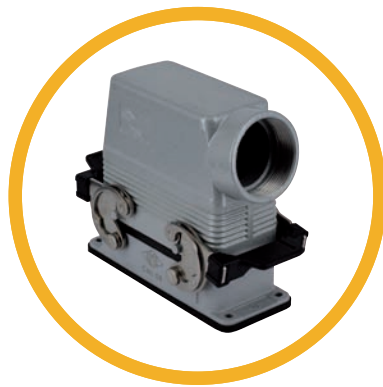
Connessione a molla Alta densità



NOVITÀ

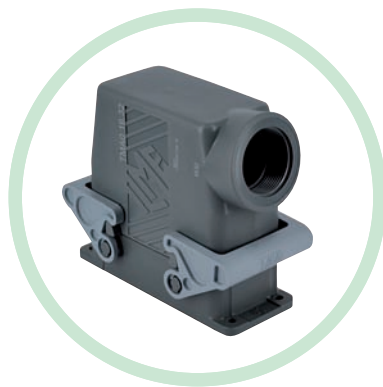
2

... poi le custodie fisse da incasso,



... serie C-Type  
leve CLASS rotative (grado di protezione IP65/IP66)

grandezza frutti/ custodie	1 LEVA		2 LEVE
	CON sportello metallico	SENZA sportello	SENZA sportello
● 49.16	CZI 15 LS	CZI 15 L	
● 66.16	CZI 25 LS	CZI 25 L	
● 66.40			CHI 50
● 44.27	CHI 06 LS	CHI 06 L	
● 57.27	CHI 10 LS	CHI 10 L	CHI 10
● 77.27	CHI 16 LS	CHI 16 L	CHI 16
● 104.27	CHI 24 LS	CHI 24 L	CHI 24
● 77.62	CHI 32 LS	CHI 32 L	CHI 32
● 104.62	CHI 48 LS	CHI 48 L	



... serie T-Type isolante  
custodie in materiale termoplastico (grado di protezione IP65)

grandezza frutti/ custodie	1 LEVA	2 LEVE
	SENZA sportello	SENZA sportello
● 44.27	TCHI 06 L	
● 57.27		TCHI 10
● 77.27		TCHI 16
● 104.27		TCHI 24

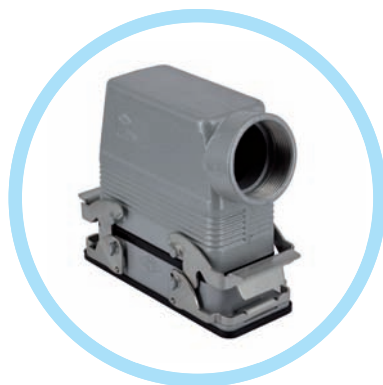


... serie C7 con grado di protezione IP67<sup>1)</sup>  
leve V-Type in acciaio inox a chiusura verticale

grandezza frutti/ custodie	1 LEVA			2 LEVE
	CON sportello metallico	CON sportello isolante	SENZA sportello	SENZA sportello
● 44.27	CVI 06 LS	CVI 06 LP	C7I 06 L <sup>1)</sup>	
● 57.27	CVI 10 LS	CVI 10 LP	CVI 10 L	C7I 10 <sup>1)</sup>
● 77.27	CVI 16 LS	CVI 16 LP	CVI 16 L	C7I 16 <sup>1)</sup>
● 104.27	CVI 24 LS	CVI 24 LP	CVI 24 L	C7I 24 <sup>1)</sup>

versione CV (grado di protezione IP65/IP66)

1) versione C7 (grado di protezione IP66/IP67)









... serie JEI:  
leve in acciaio zincato a chiusura verticale (grado di protezione IP65/IP66)

grandezza frutti/ custodie	1 LEVA		2 LEVE
	CON sportello isolante	SENZA sportello	SENZA sportello
● 44.27	JCVI 06 LP	JCVI 06 L	
● 57.27	JCVI 10 LP	JCVI 10 L	JCVI 10
● 77.27	JCVI 16 LP	JCVI 16 L	JCVI 16
● 104.27	JCVI 24 LP	JCVI 24 L	JCVI 24

2





... oppure le custodie fisse da parete,

... serie C-Type  
leve CLASS rotative (grado di protezione IP65/IP66)

grandezza frutti/ custodie	1 LEVA				2 LEVE		
	 CON sportello metallico	 SENZA sportello	 CON sportello metallico	 SENZA sportello	 SENZA sportello	 SENZA sportello	
	Pg	Metrico	Pg	Metrico	Pg	Metrico	
● 49.16 <sup>2)</sup>	CZP 15 LS221	MZP 15 LS225	CZP 15 L	MZP 15 L25			(Pg21-M25)
● 66.16 <sup>2)</sup>	CZAP 25LS221	MZAP 25LS225	CZAP 25 L	MZAP 25 L25			(Pg21-M25)
● 66.40 <sup>2)</sup>					CHP 50.21	MHP 50.32	(Pg21-M32)
● 44.27 <sup>2)</sup>	CHP 06 LS	MHP 06 LS20	CHP 06 L	MHP 06 L20			(Pg16-M20)
● 57.27 <sup>2)</sup>	CHP 10 LS	MHP 10 LS20	CHP 10 L	MHP 10 L20	CHP 10	MHP 10.20	(Pg16-M20)
● 77.27 <sup>2)</sup>	CHP 16 LS	MHP 16 LS25	CHP 16 L	MHP 16 L25	CHP 16	MHP 16.25	(Pg21-M25)
● 104.27 <sup>2)</sup>	CHP 24 LS	MHP 24 LS25	CHP 24 L	MHP 24 L25	CHP 24	MHP 24.25	(Pg21-M25)
● 77.62	CHP 32 LS	MHP 32 LS40	CHP 32 L	MHP 32 L40	CHP 32	MHP 32.40	(Pg36-M40)
● 104.62	CHP 48 LS	MHP 48 LS40	CHP 48 L	MHP 48 L40			(Pg36-M40)

2) disponibili anche versioni alte con precodice CAP/MAP/CZAP/MZAP e filettature Pg21, Pg29, M32, M40, M50









... serie T-Type isolante  
custodie in materiale termoplastico (grado di protezione IP65)

grandezza frutti/ custodie	1 LEVA		2 LEVE		
	 SENZA sportello	 SENZA sportello	 SENZA sportello	 SENZA sportello	
	Metrico	Metrico	Metrico	Metrico	
● 44.27	TMAP 06 L25				(M25) <sup>5)</sup>
● 57.27			TMAP 10.25		(M25) <sup>5)</sup>
● 77.27			TMAP 16.32		(M32) <sup>6)</sup>
● 104.27			TMAP 24.32		(M32) <sup>6)</sup>

5) disponibile anche versione M32

6) disponibile anche versione M40

... serie C7 con grado di protezione IP67<sup>4)</sup>  
leve V-Type in acciaio inox a chiusura verticale







grandezza frutti/ custodie	1 LEVA				2 LEVE				
	 CON sportello metallico	 CON sportello isolante	 CON sportello metallico	 CON sportello isolante	 SENZA sportello	 SENZA sportello	 SENZA sportello	 SENZA sportello	
	Pg	Metrico	Pg	Metrico	Pg	Metrico	Pg	Metrico	
● 44.27 <sup>3)</sup>	CVP 06 LS	MVP 06 LS20	CVP 06 LP	MVP 06 LP20	C7P 06 L <sup>4)</sup>	M7P 06 L20 <sup>4)</sup>			(Pg16-M20)
● 57.27 <sup>3)</sup>	CVP 10 LS	MVP 10 LS20	CVP 10 LP	MVP 10 LP20	CVP 10 L	MVP 10 L20	C7P 10 <sup>4)</sup>	M7P 10.20 <sup>4)</sup>	(Pg16-M20)
● 77.27 <sup>3)</sup>	CVP 16 LS	MVP 16 LS25	CVP 16 LP	MVP 16 LP25	CVP 16 L	MVP 16 L25	C7P 16 <sup>4)</sup>	M7P 16.25 <sup>4)</sup>	(Pg21-M25)
● 104.27 <sup>3)</sup>	CVP 24 LS	MVP 24 LS25	CVP 24 LP	MVP 24 LP25	CVP 24 L	MVP 24 L25	C7P 24 <sup>4)</sup>	M7P 24.25 <sup>4)</sup>	(Pg21-M25)

versione CV/MV (grado di protezione IP65/IP66)

3) disponibili anche versioni alte con precodice CVAP/MVAP/C7AP/M7AP e filettature Pg21, Pg29, M32, M40

4) versione C7/M7 (grado di protezione IP66/IP67)

... serie JEI:  
leve in acciaio zincato a chiusura verticale (grado di protezione IP65/IP66)









grandezza frutti/ custodie	1 LEVA				2 LEVE		
	 CON sportello isolante	 CON sportello isolante	 SENZA sportello	 SENZA sportello	 SENZA sportello	 SENZA sportello	
	Pg	Metrico	Pg	Metrico	Pg	Metrico	
● 44.27	JCVP 06 LP	JMVP 06 LP20	JCVP 06 L	JMVP 06 L20			(Pg16-M20)
● 57.27	JCVP 10 LP	JMVP 10 LP20	JCVP 10 L	JMVP 10 L20	JCVP 10	JMVP 10.20	(Pg16-M20)
● 77.27	JCVP 16 LP	JMVP 16 LP25	JCVP 16 L	JMVP 16 L25	JCVP 16	JMVP 16.25	(Pg21-M25)
● 104.27	JCVP 24 LP	JMVP 24 LP25	JCVP 24 L	JMVP 24 L25	JCVP 24	JMVP 24.25	(Pg21-M25)

grado di protezione secondo EN 60529, a connettore completo e accoppiato

# 3









... infine le custodie mobili,

... per serie C-Type / C7 / JEI

grandezza frutti/ custodie	1 LEVA		2 LEVE		1 LEVA		2 LEVE		
									
● 49.16 <sup>6)</sup>	Pg CZO 15 L	Metrico MZO 15 L20	Pg	Metrico	Pg CZAV 15 L16	Metrico MZV 15 L20	Pg	Metrico	(Pg16-M20)
● 66.16 <sup>6)</sup>	CZO 25 L	MZO 25 L20			CZV 25 L	MZV 25 L20			(Pg16-M20)
● 66.40 <sup>6)</sup>			CHO 50	MHO 50.25			CAV 50.21	MAV 50.25	(Pg21-M25)
● 44.27 <sup>6)</sup>	CHO 06 L16	MHO 06 L20			CHV 06 L16	MHV 06 L20			(Pg16-M20)
● 57.27 <sup>6)</sup>	CHO 10 L	MHO 10 L20	CHO 10	MHO 10.20	CHV 10 L	MHV 10 L20	CHV 10	MHV 10.20	(Pg16-M20)
● 77.27 <sup>6)</sup>	CHO 16 L	MHO 16 L25	CHO 16	MHO 16.25	CHV 16 L	MHV 16 L25	CHV 16	MHV 16.25	(Pg21-M25)
● 104.27 <sup>6)</sup>	CHO 24 L	MHO 24 L25	CHO 24	MHO 24.25	CHV 24 L	MHV 24 L25	CHV 24	MHV 24.25	(Pg21-M25)
● 77.62	CHO 32 L	MHO 32 L40	CHO 32	MHO 32.40	CHV 32 L	MHV 32 L40	CHV 32	MHV 32.40	(Pg36-M40)
● 104.62	CHO 48 L	MHO 48 L40			CHV 48 L	MHV 48 L40			(Pg36-M40)

6) disponibili anche versioni alte con precodice CAO/MAO/CAV/MAV/CZAO/MZAO/CZAV/MZAV e filettature Pg21, Pg29, M32, M40, M50

... per serie T-Type isolante  
custodie in materiale termoplastico (grado di protezione IP65)







grandezza frutti/ custodie	1 LEVA		2 LEVE		1 LEVA		2 LEVE		
									
● 44.27		Metrico TMAO 06 L25		Metrico		Metrico TMAV 06 L25		Metrico	(M25) <sup>7)</sup>
● 57.27				TMAO 10.25				TMAV 10.25	(M25) <sup>7)</sup>
● 77.27				TMAO 16.32				TMAV 16.32	(M32) <sup>8)</sup>
● 104.27				TMAO 24.32				TMAV 24.32	(M32) <sup>8)</sup>

7) disponibile anche versione M32







8) disponibile anche versione M40

## Custodie fisse per frutti CK ●

CKAX = LEVA IN ACCIAIO INOX

ISOLANTE			METALLICHE		
da incasso	da incasso angolari	da parete	da incasso	da incasso angolari	da parete
	 SENZA uscita pressacavo	 CON uscita pressacavo		 SENZA uscita pressacavo	 CON uscita pressacavo
CK 03 I	CK 03 IA	CK 03 IAPS MK IAP20	CKAX 03 I CKA 03 I	CKAX 03 IA CKA 03 IA	CKAX 03 IAPS MKAX IAP20 CKA 03 IAPS MKA IAP20

## Custodie mobili per frutti CK ●

ISOLANTE			METALLICHE		
uscita laterale con piolini	uscita verticale con piolini		uscita laterale con piolini	uscita verticale con piolini	
	con piolini	con leva		con piolini	con leva
					
CK 03 VAS MK VA20	CK 03 VS MK V20	CK 03 VGS MK VG20	CKA 03 VAS MKA VA20	CKA 03 VS MKA V20	CKAX 03 VGS MKAX VG20 CKA 03 VGS MKA VG20

## Coperchietti per frutti femmina

## Coperchietti per frutti maschi

ISOLANTE		METALLICI		ISOLANTE		METALLICI	
con piolini	con leva	con piolini	con leva	con piolini	con leva	con piolini	con leva
CK 03 C	CK 03 CX	CKA 03 C	CKAX 03 CX	CK 03 CA	CK 03 CXA	CKA 03 CA	CKAX 03 CXA

CK/CKA IAPV/VA/VG=Pg 11

MK/MKA IAPV/VA/VG=M20

grado di protezione secondo EN 60529, a connettore completo e accoppiato

**CMCE - CME - CMSE**

Connessione crimp 16A - 830V  
 Connessione a vite 16A - 830V  
 Connessione a molla 16A - 830V  
 ..... da pag. 134



**CP**

Connessione a vite 35A - 400V/690V  
 ..... da pag. 149



**CX - FRUTTI MISTI**

Connessione crimp 10A/16A/40A  
 ..... da pag. 151



**CX**

Connessione a vite 16A/80A  
 ..... da pag. 154



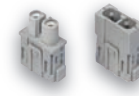
**MIXO**

Connessione crimp 200A/100A/70A  
 40A/16A/10A/5A  
 ..... da pag. 160



**MIXO**

Connessione a vite 40A  
 ..... da pag. 165



**MIXO**

Connessione a molla 16A  
 ..... da pag. 172



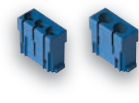
**MIXO**

Dati RJ45-USB-POF-BUS-COAX  
 ..... da pag. 183



**MIXO**

Pneumatica  
 ..... da pag. 191



**DESINA**

Connessione crimp  
 ..... da pag. 449



**COB**

- montaggio interno quadro  
 - ispezionabile  
 ..... pag. 408



**FISSAGGIO A PANNELLO**

..... pag. 413



**W-TYPE**

pag. 322  
 - metalliche con trattamento di cromatazione  
 - per ambienti aggressivi  
 - IP66



**EMC**

pag. 335  
 - per compatibilità elettromagnetica  
 - guarnizioni conduttive  
 - IP66



**180 °C**

pag. 352  
 - metalliche  
 - per ambienti con alte temperature  
 - IP65



**LEVA CENTRALE**

pag. 359  
 - per spazi di montaggio limitati  
 - riduce sforzo disaccoppiamento frutti  
 - IP65



**IP68**

pag. 369  
 - tenuta stagna  
 - robustezza meccanica  
 - resistente agli agenti chimici  
 - chiusura a vite o baionetta



**830V**

pag. 390  
 - isolate per frutti CME e CMCE 16p  
 - leva CLASS  
 - IP65/IP66



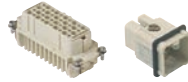
**CK - CKS**

Connessione a vite 10A - 250V  
 Connessione a molla 10A - 400V  
 ..... da pag. 41



**CD**

Connessione crimp 10A - 250V  
 ..... da pag. 44



**CT - CTS**

Connessione a vite 10A - 250V  
 Connessione a molla 10A - 250V  
 ..... da pag. 54



**CDD**

Connessione crimp 10A - 250V  
 ..... da pag. 58



**CQ**

Connessione crimp 10A/16A/40A  
 ..... da pag. 67



**CDA - CDC**

Connessione a vite 16A - 250V  
 Connessione crimp 16A - 250V  
 ..... da pag. 72



**CQE**

Connessione crimp 16A - 500V  
 ..... da pag. 79



**CSH**

Connessione a molla senza utensili 16A - 500V  
 ..... da pag. 86



**CNE - CSE - CCE**

Connessione a vite 16A - 500V  
 Connessione a molla 16A - 500V  
 Connessione crimp 16A - 500V  
 ..... da pag. 95



**JCNE - JCSE**

Connessione a vite 16A - 500V  
 Connessione a molla 16A - 500V  
 ..... da pag. 106



**CSS**

Connessione a molla doppio morsetto 16A - 500V  
 ..... da pag. 118



**CT - CTE - CTSE**

Connessione a vite 16A - 400V/500V  
 Connessione a molla ..... da pag. 124



**C-TYPE**

- metalliche  
 - leva CLASS rotativa  
 - IP65/IP66

pag. 200



**V-TYPE IP67**

- metalliche  
 - tenuta stagna in poco spazio  
 - leva in acciaio inox  
 - IP66/IP67

pag. 249



**V-TYPE IP65/IP66**

- metalliche  
 - tenuta stagna in poco spazio  
 - leva in acciaio inox  
 - IP65/IP66

pag. 260



**T-TYPE**

- isolanti  
 - robuste  
 - resistenti agli agenti chimici  
 - IP65

pag. 277



**JEI**

- metalliche  
 - leva in acciaio zincato  
 - IP66

pag. 287



**BIG - CUSTODIE MOBILI**

- ampie e scomponibili pag. 296  
 - più uscite cavo  
 - cablaggio semplificato e ispezionabili  
 - alloggio per schede elettroniche  
 - IP66



**I.L.M.E. Spa**

Via Marco Antonio Colonna, 9  
20149 Milano

☎ +39 02345605.1 - fax +39 02316330

www.ilme.com - www.ilme.eu

**ILME FRANCE S.A.R.L.**

Rue Roland Garros - B.P. 125  
Parc d'Activités de l'Aéroport  
42163 Andrézieux - Bouthéon

☎ +33 (0)4 77 36 23 36 - fax +33 (0)4 77 36 97 97

e-mail: ilme-france@ilme.fr - www.ilme.fr

**ILME GmbH**

Max-Planck-Straße 12 - 51674 Wiehl (Germany)

☎ +49 (0)2261 - 7955-0

fax +49 (0)2261 - 7955-5 (Auftragsannahme) - +49 (0)2261 - 7955-9 (Vertrieb)

e-mail: technik@ilme.de - www.ilme.de

**ILME UK LIMITED**

50 Evans Road, Venture Point  
Speke Merseyside L24 9PB

☎ +44 (0) 151 3369321 - fax +44 (0) 151 3369326

e-mail: sales@ilmeuk.co.uk - www.ilmeuk.co.uk

**ILME NORDIC AB**

Transportvägen 18  
24642 Löddeköpinge (Sweden)

☎ +46 46 18 28 00 - fax +46 46 18 28 10

e-mail: info@ilme.se

**ILME JAPAN CO., LTD.**

Kobe International Business Center 511  
650-0047, 5-2, 5 - Chome,  
Minatojima Minami-Machi - Chuo-Ku, Kobe Japan

☎ +81 7830 22005 - fax +81 7830 22060

www.ilmejapan.co.jp

**ILME CHINA REP. OFFICE**

Room 201 Universal Centre,  
no.175 XiangYan NanLu,  
200031 Shanghai

☎ +86 - 21 - 62489961 - fax +86 - 21 - 62489961

www.ilmechina.com

